

Due to the high demand for a low lead-time, cost effective solution, The Automation Warehouse has developed their own line of drip legs.

When water and oil meet in compressed air systems it can sometimes create problems such as clogging or sticking in lines, automation equipment, or other components. The DL Series Drip Leg provides an effective first line of defense for decreasing and collecting water and water aerosols. Easy to install and constructed with Schedule 40 Steel Pipe, the DL Series is an effective and economical solution to help protect compressed air systems.

FEATURES	
Drip Leg Expansion Chamber	Pipe Sizes 1-1/2" & 3" Schedule 40 Steel Pipe
Inlet Ball Valve	Vented Lockable With Brass Body & Lever Handle
Outlet Ball Valve	Brass Body With Lever Handle
Maximum Operating Pressure	125 PSI (pressure tested to 125 PSI)
Temperature Range	50 Deg F to 200 Deg F

HOW TO ORDER	
INLET/OUTLET PORT SIZE	PART NUMBER
1/4" NPT	DL-1/4
3/8" NPT	DL-3/8
1/2" NPT	DL-1/2
3/4" NPT	DL-3/4
1" NPT	DL-1

****All drip legs come with a 3/8" port drain. G thread versions may be available upon request.****

What is a drip leg? How does it work?

- Condensate is moisture expelled by air below its dew point; condensation occurs in compressed air systems creating water.
- A drip leg will catch this water preventing it from getting into your equipment or back into your compressor.

Consequences of not having a drip leg

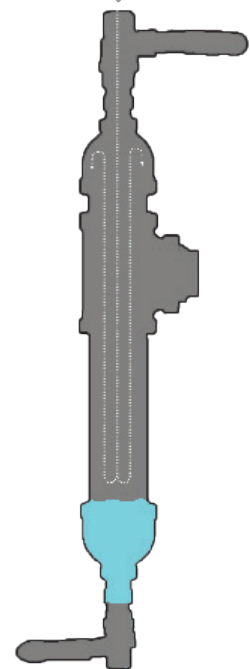
- Water can emulsify with oil in the compressed air causing equipment to stick together and clog up orifices.
- Where oil is added as a lubricant, water in the lines can severely reduce its capabilities.
- Water in a pneumatic system obstructs the air flow and will delay or stop normal working and can cause damage or corrosion to the system.

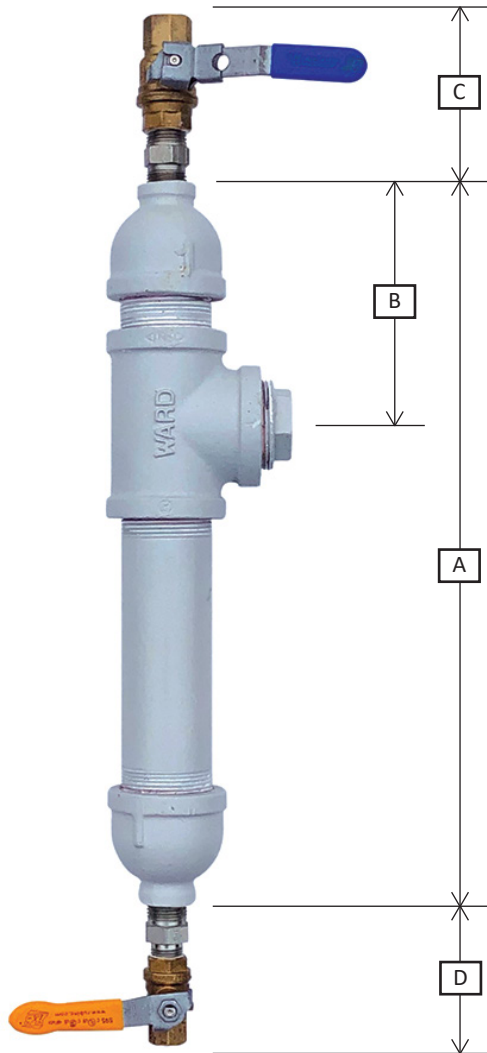
Tips & Pointers

- Install drip legs at the lowest point of your line.
- Remember to drain your drip leg.
- If unsure, consult an expert at The Automation Warehouse to determine what other air preparation components may be required for your air system.



Compressed Air





DRIP LEG DIMENSIONS		
	1/4" TO 1/2"	3/4" & 1"
A	15"	22"
B	5"	7.5"
C	3.5"	3.75"
D	3"	5"
ALL DIMENSIONS +/- .25"		

Ask About Your Logo Here & Custom Paint Colors!

ACCESSORIES			
Particulate Filter Regulator			
	1/2" NPT	GAFR400C15ASJWT	
	1" NPT	GAFR600C25ASJWT	
HANGER STYLE MOUNTING BRACKET			
	FOR 1/4" TO 1/2" DRIP LEG	DL-H-BRKT-A	
	FOR 3/4" TO 1" DRIP LEG	DL-H-BRKT-B	
"U" STYLE MOUNTING BRACKET			
	FOR 1/4" TO 1/2" DRIP LEG	DL-U-BRKT-A	
	FOR 3/4" TO 1" DRIP LEG	DL-U-BRKT-B	
WATER CATCH BOTTLE WITH TUBE AND FITTINGS			
	FOR ALL DRIP LEGS	FTA-1870	
PIPE NIPPLES (NPT)		HEX BUSHINGS (NPT)	
1/4"	113RB-B25	1/4" M X 1/8" F	110A-BA
3/8"	113A-C2	3/8" M X 1/4" F	110A-CB
1/2"	113A-D2	1/2" M X 3/8" F	110A-DC
3/4"	113A-E2	3/4" M X 1/2" F	110A-ED
1"	113RB-F3	1" M X 3/4" F	110A-FE



Did you know The Automation Warehouse offers pressure switches, gauges and other pressure sensors? Contact us for a quote today!