


EOS4 XT

SAFETY LIGHT CURTAIN RESISTENT TO HIGH VIBRATIONS

To guarantee a correct and safe installation and operation of the light curtain, it is **MANDATORY** to consult the user manual available at the REER <https://www.reersafety.com>

TECHNICAL CHARACTERISTICS SAFETY LIGHT CURTAIN EOS4 XT 14mm

Resolution (mm)	14	
Protected height (mm)	160 ... 1810	
Selectable working range (m)	0 ... 3 (low)	1 ... 6 (high)
Safety outputs	2 PNP – 400mA @ 24VDC	
Response time (ms)	4 ... 23,5 (see models tables)	
Power supply (Vcc)	24 ± 20%	
Connections	Connectors M12 (5 poli > emitter / 8 poli > receiver)	
Operating temperature (°C)	-20 ... 55°C	
Grado di protezione *	IP 65 - IP 67	
Section dimensions (mm)	28 x 30	
Max. consumption (W)	1 (Emitter)	2 (Receiver)
Light curtain lifetime	20 years	
Safety level	Type 4	EN 61496-1:2013 IEC 61496-2:2013
	SIL 3	IEC 61508-1: (ed.2) IEC 61508-2: (ed.2) IEC 61508-3: (ed.2) IEC 61508-4: (ed.2)
	SILCL 3	IEC 62061:2005/A2:2015
	PL e - Cat.4	EN ISO 13849-1:2015

* Devices are not suitable for outdoor use without supplementary measures.

Models EOS4 XT	151	251	301	451	601	751	901
Number of beams	15	25	30	45	60	75	90
Response time	4	5	5,5	7,5	9	11	13
Protected area (mm)	160	260	310	460	610	760	910
Overall barrier height (mm)	213	313	363	513	663	813	963
PFHd (IEC 61508)	1,11E-08	1,23E-08	1,24E-08	1,38E-08	1,51E-08	1,65E-08	1,78E-08
Dcavg (ISO 13849-1)	95,7%	95,6%	95,6%	95,5%	95,5%	95,4%	95,3%
MTTFd (ISO 13849-1) (years)	529,1	486,6	476,4	431,5	395,8	364,3	338,5
CCF (ISO 13849-1)	80%						

Models EOS4 XT	1051	1201	1351	1501	1651	1801
Number of beams	105	120	135	150	165	180
Response time	14,5	16,5	18	20	22	23,5
Protected area (mm)	1060	1210	1360	1510	1660	1810
Overall barrier height (mm)	1113	1263	1413	1563	1713	1863
PFHd (IEC 61508)	1,91E-08	2,04E-08	2,18E-08	2,31E-08	2,45E-08	2,57E-08
Dcavg (ISO 13849-1)	95,3%	95,2%	95,2%	95,1%	95,1%	95,1%
MTTFd (ISO 13849-1) (years)	315,2	295,8	277,8	262,6	248,3	236,1
CCF (ISO 13849-1)	80%					

SAV 8E / SAV 12E vibration-damping supports - application sheet

The purpose of this application sheet is to illustrate the correct use of vibration-damping supports used on **EOS** series barriers undergoing severe vibrations. The following table shows the vibration-damping set to use depending on the barrier model.

BARRIER HEIGHT	CODE	MODEL	NUMBER OF DAMPERS
150	1310973	SAV 8E (2 dampers for insert)	8
250...1800	1310974	SAV 12E (2 dampers for insert)	12

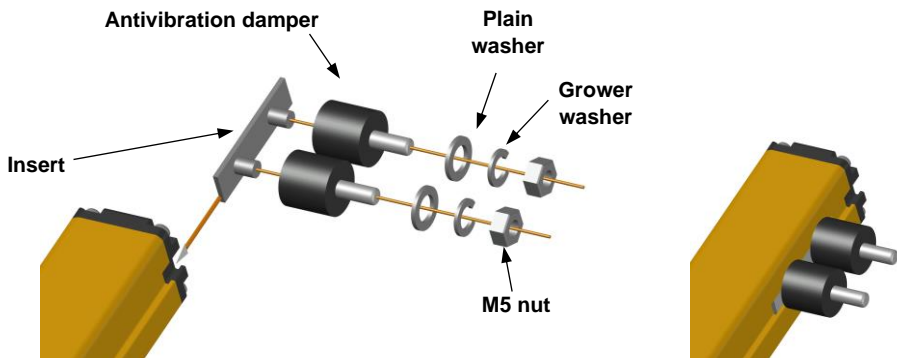
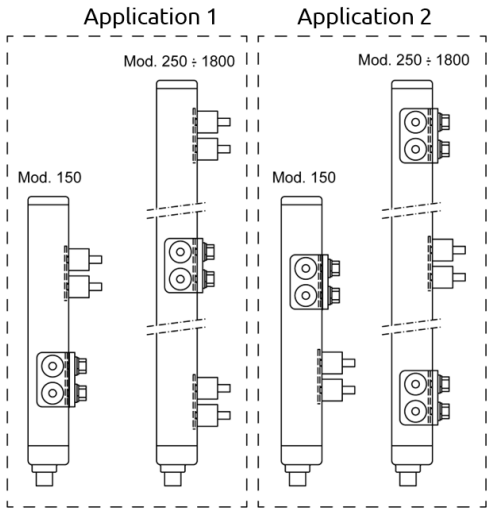


Figure 1

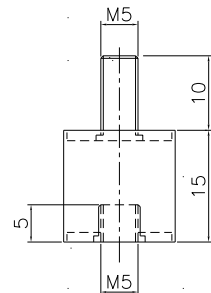
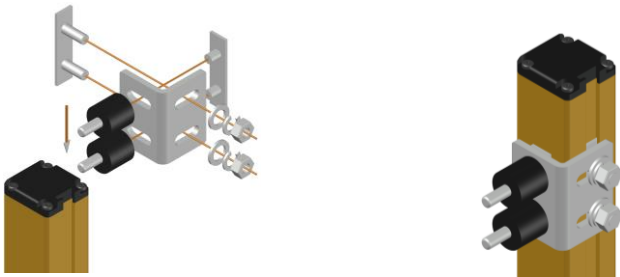


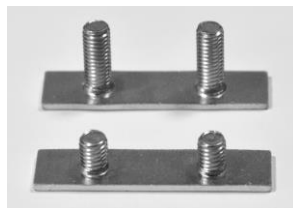
Figure 2 - Dimensions

ASSEMBLY

SIDE ASSEMBLY WITH BRACKET



INSERTS



12mm inserts
(supplied with barrier)

4mm inserts
(supplied with dampers)

SOLUTION FOR TWO AXIS VIBRATION REDUCTION

Example 1:



Example 2:

